

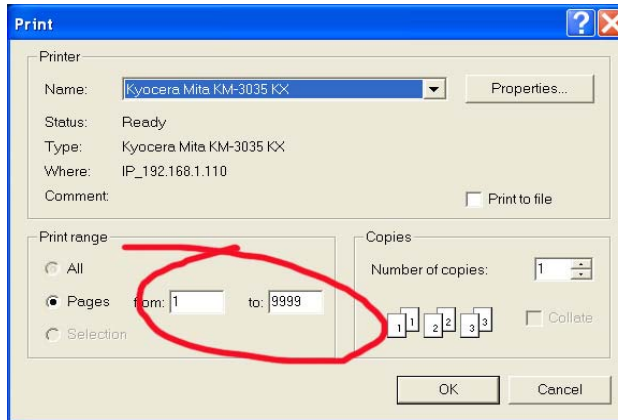


To Print Pattern
ONLY

Select
Pages 3 & 4

On your printer
Settings

Mad Men Holiday Coat



This pattern will fit any 18” doll (American Girl Doll, AG doll, Gotz doll, etc)

SUPPLIES

- Yarn – Worsted weight of your choice & (short to medium hair), Bouclé yarn, about 75 g total.
- Needles size – based according to selected yarn. Check the yarn for recommended needle size and adjust it depending on your comfort level. Create a swatch (20 st x 20 row sample of stockinette stitch) and check for correct gauge. Ideally (but not necessary) you want to have circular needles.
- 4 stitch holders. If you do not own stitch holders already – no need to invest in them. They can be substituted by pieces of yarn of contrasting color. In fact I personally prefer the latter.
- Darning needle (Large sewing needle with a large eye and dull end)
- Crochet hook of the size appropriate for this yarn.
- 8 Stitch markers

BASIC ABBREVIATIONS

- **K** – knit
- **P** – purl
- **Sl** – slip (move stitch to another needle without working it)
- **K2Tog** - knit each 2 stitches together <http://www.youtube.com/watch?v=MDvVNZq10bA>
- **RS** – right side / face side
- **WS** – wrong side / reverse / hidden side of the garment
- **PM** – place (stitch) marker
- **M1L, M1R** - Make 1 left / right <http://www.youtube.com/watch?v=gGbOiIvWLjc>,
- **M1** – increase using “running thread”
- **K1f&B** – increase using both front and back of the same stitch <http://www.youtube.com/watch?v=shpV7BewvLU>,
- **YO** – yarn over http://www.youtube.com/watch?v=M_Li1FAMvSc&feature=related

Edging;

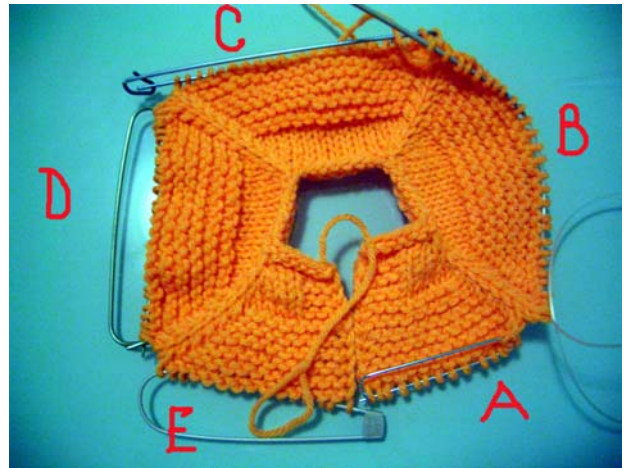
as a Continental / European knitter I “edge” all my knitting by SL first st of every row and P every last st (with very few exceptions). This creates a smooth “chain-like” edge, that looks neat and easy to sew to another edge. The instructions for this sweater are written with “edging”. If you prefer not to do it, replace first and last stitches of each row with the same stitch as the one following or the one in front of.

Quick overview of this pattern:

Top-Down knitting:

This garment will be worked from the neckline down and out in a commonly known as a knitting “top-down” method. We do it in a raglan style with miter (slanted) lines to represent armholes.

Most “top-down” garments are created by knitting bodice first, sleeves later. I found it to be uncomfortable and reversed the process. However the basic idea is the same. Your garment will begin to shape up as shown here;



Divide all stitches into 5 sections; 2 sleeves, 2 front panels, 1 back panel. These five sections will be separated by 4 stitches (RAGLAN) stitches. Increasing around these stitches will shape this garment. Mark these 4 stitches with contrasting color yarn (or stitch markers) – PM (place marker) before and immediately after each Raglan stitch.

There are 2 major parts to this and every pattern I create; **upper** - Everything above the armhole & **lower** body – below armhole including the lower part of the sleeve.

There are couple of additional steps we will take in order for this particular pattern to be a success; Since we will work a large part of the sweater in a stockinette stitch

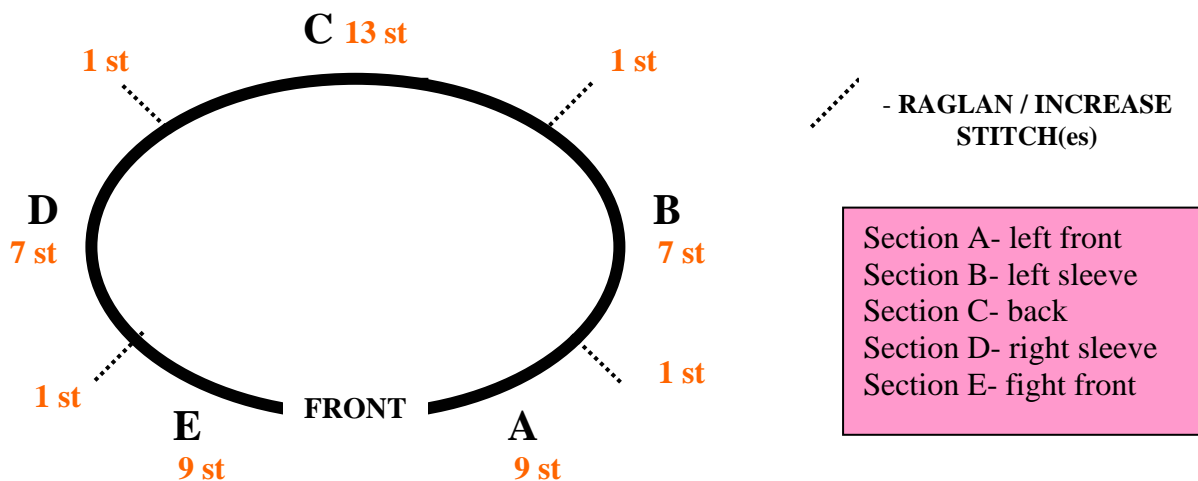
http://www.youtube.com/watch?v=qT8_GqPAXqo&feature=channel

and it tends to roll on to itself, we will work edges in garter stitch

<http://www.youtube.com/watch?v=2Uivcl9z6Pk> in order to prevent our garment from misshaping at the same time creating a “trim” panel in the front opening area.

What this means is that edges of the front panels for the coat will have a few stitches worked in Garter stitch; Knit on both the RS and WS. You will see it in the pattern as we move ahead.

Use this FIRST ROW (before increase) chart to count your stitches and mark them if you so desire with stitch markers or scrap yarn.



While working RS you will move counterclockwise starting in the front at the edge of section “A” all around your work ending up again in the front passed section “E”. This is when you will create all your increases.

MAD MEN Holiday Coat

Gauge 4 st x 6 rows = 1”

Chose your yarn and select correct needle size to achieve correct gauge.

CO 49 stitches and work in stockinette stitch with 4 st garter edging on both front panels, as well as creating buttonhole at the end of second row.

Row 1 (WS) – SL1, K4, P to last 5 st, K4, P1

Row 2 (RS) – SL1, K to last 5 stitches, K2Tog , move just created stitch back to left needle, K2Tog, K1, P1

In the following row re-create the 2 stitches you have just reduced and this will complete a buttonhole for an appropriately sized button;

Row 3 (WS) – SL1, K2, Cast on 2 (new) stitches using “backwards loops”, P to last 5 st, K4, P1

At this point place your stitch markers (PM) around Raglan stitches for your increases. Stitch markers belong between the increase and Raglan stitch.

Your first row of increases will look like this;

Row 4 (RS) – (increase 8 st)

SL1, K8, M1L, **PM**, K1, **PM**, M1R, K7, M1L, **PM**, K1, **PM**, M1R, K13, M1L, **PM**, K1, **PM**, M1R, K7, M1L, **PM**, K1, **PM**, M1R, K8, P1 (=57 st)

Row 5 (WS) – SL1, K4, P to last 5 st, K4, P1

Continue increasing on RS as in Row 4 (RS); number of stitches between increases will grow as you move along. Every RS row should add 8 stitches to your total. Check number of stitches at the end of each WS row. Repeat Row 5 (WS) for every WS. Continue on to complete 8 increases through Row 19 (WS) ending up with 113 stitches.

Row 20 (RS) –SL1, K16, (Section A) Place just completed 17 stitches on holder (This is section A / left front panel). Remove your first Stitch marker. Continue working K25 (section B / left sleeve) removing next 2 SMs. STOP at SM 4.

Place all other sections (except section B) on holders; 29 st – sect. C / back, 25 st – sect. D/ right sleeve, 17 st - section E/ right front. Remove Stitch Markers as you come across them.

You are only working on Section B (left sleeve) now.

LEFT SLEEVE

Row 20 (RS) – already completed (25 st), turn to WS

Row 21 (WS) – SL1, P to end

Row 22 (RS) – SL1, K to last stitch, P1

Repeat 21 (WS) & 22 (RS) through row 39 (WS)

Row 40 (RS) – attach secondary yarn, here – boucle, SL1, K to last st, P1

Continue working in Garter stitch (all K) for about 1”, bind off



RIGHT SLEEVE

Place 25 stitches of section D (right sleeve) and starting on the RS repeat from row 20 (as for section B)

LOWER BODY

On RS - Replace stitches from section A to right needle and the rest of the live stitches on the left needle starting with end of section E. You have done it correctly if tips of your needles meet under left sleeve.

As section A Row 20 is completed, continue to section C & E, adding second buttonhole as follows;

Row 20 (RS) –K to last 5 stitches, K2Tog , move new stitch back to left needle, K2Tog, K1, P1

Row 21 (WS) - SL1, K2, Cast on 2 (new) stitches using “backwards loops”, P to last 5 st, K4, P1

Beginning with 63 stitches increase for a line as follows;

Row 22 (RS) – SL1, K11, PM, M1L, PM, K13, PM, M1L, PM, K13, PM, M1R, PM, K13, PM, M1R, PM, K11, P1

Row 23 (WS) - SL1, K4, P to last 5 stitches, K4, P1

Row 24 (RS) – SL1, K to last stitch, P1 (replace SM as you go / no increases this row)

Row 25 (WS) - SL1, K4, P to last 5 stitches, K4, P1

Increase around stitch markers as you did for initial shaping in Row 4

Row 26 (RS) - SL1, K11, M1L, PM, K1, PM, M1R, K13, M1L, PM, K1, PM, M1R, K13, M1L, PM, K1, PM, M1R, K13, M1L, PM, K1, PM, M1R, K11, P1

Row 27 (WS) – SL1, K4, P to last 5 stitches, K4, P1

Row 28 (RS) through **Row 33 (WS)** repeat Rows 24 and 25 with no increases

Another increase;

Row 34 (RS) - SL1, K12, M1L, PM, K1, PM, M1R, K15, M1L, PM, K1, PM, M1R, K15, M1L, PM, K1, PM, M1R, K15, M1L, PM, K1, PM, M1R, K12, P1

Row 35 (WS) - SL1, K4, P to last 5 stitches, K4, P1

Row 36 (RS) through **Row 41 (WS)** repeat Rows 24 and 25 with no increases

Last increase;

Row 42 (RS) - SL1, K13, M1L, PM, K1, PM, M1R, K17, M1L, PM, K1, PM, M1R, K17, M1L, PM, K1, PM, M1R, K17, M1L, PM, K1, PM, M1R, K13, P1

Row 43 (WS) - SL1, K4, P to last 5 stitches, K4, P1

Row 44 (RS) through **Row 49 (WS)** repeat Rows 24 and 25 with no increases

(At this point if you would like this garment to be longer – add appropriate number of rows here.)

Row 50 (RS) – attach secondary yarn. Work in garter stitch for about 1”, bind off

COLLAR

use secondary (boucle or eyelash) yarn. Pick up stitches along the neckline 4 st away from the center front. You should end up with about 39 stitches. Work in Garter stitch and add 4 – 5 stitches **every other** row, spreading increases equally along the row. About 3 such increases should yield about 1” inch collar. If you wish for the collar to be wider, simply add appropriate number of rows.

HAT

With secondary yarn CO 50 st and work in Garter stitch for total of about 2 ½” before decreasing. On RS rows only decrease by K2Tog throughout the row. Continue until 6 or less stitches are left.

Pull remaining stitches together by sliding the yarn tail through all remaining stitches starting at the last stitch (away from the tail end).

Sew up the seams and attach buttons.